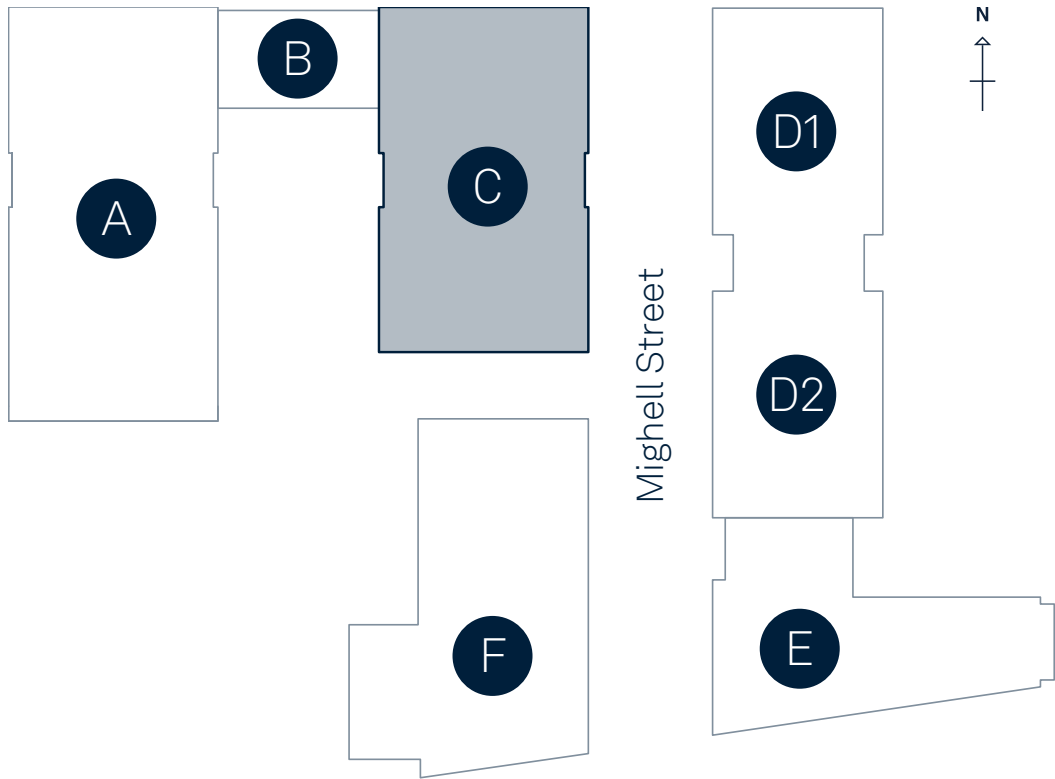


# Three Neptune Square

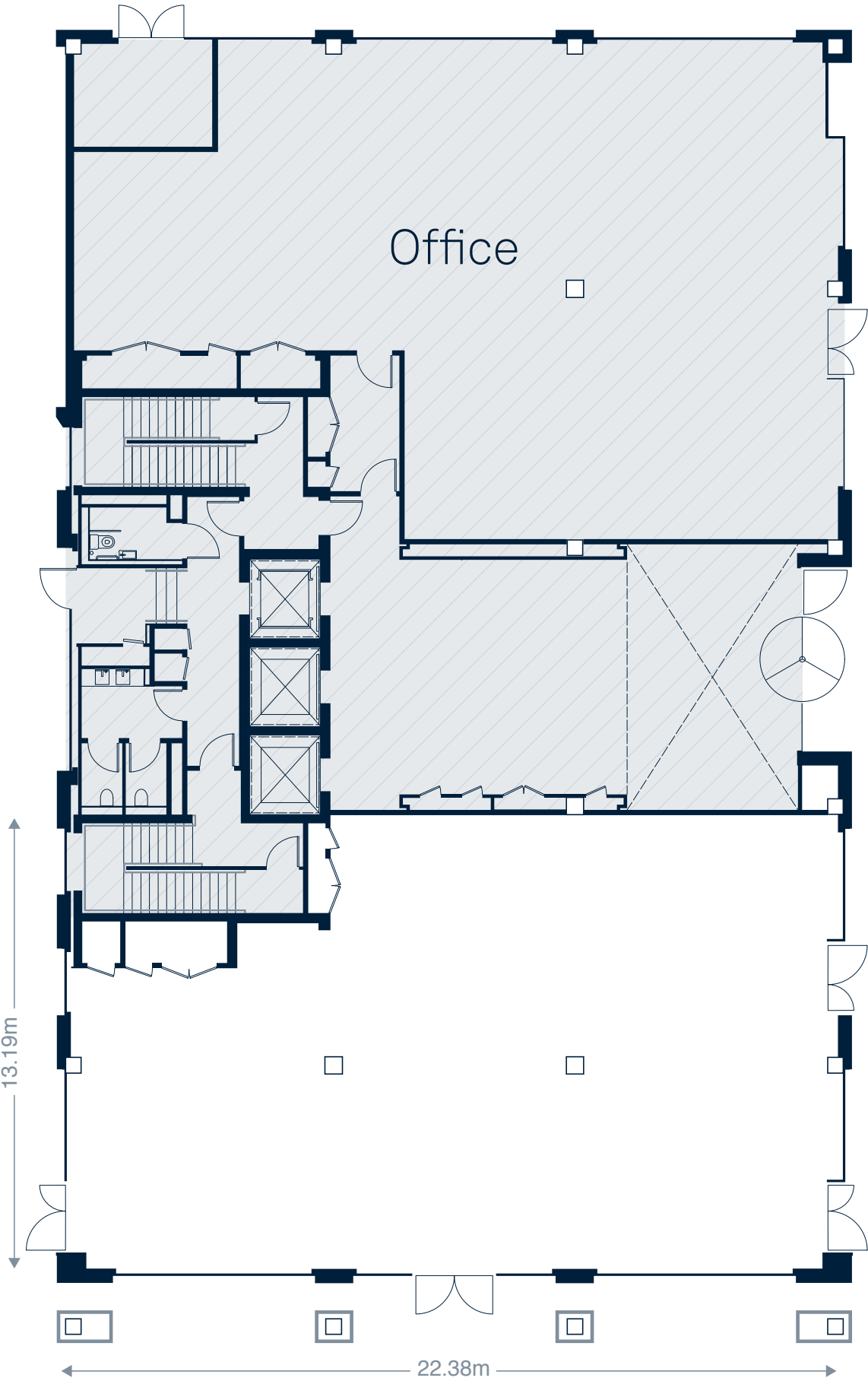
## Block C

Office and Leisure building



**Area:**  
Ground floor 2,813ft<sup>2</sup>  
261m<sup>2</sup>

**Floor to Ceiling Height:**  
4,200mm—4,250mm  
(\*Structural Slab Level to Concrete Soffit)

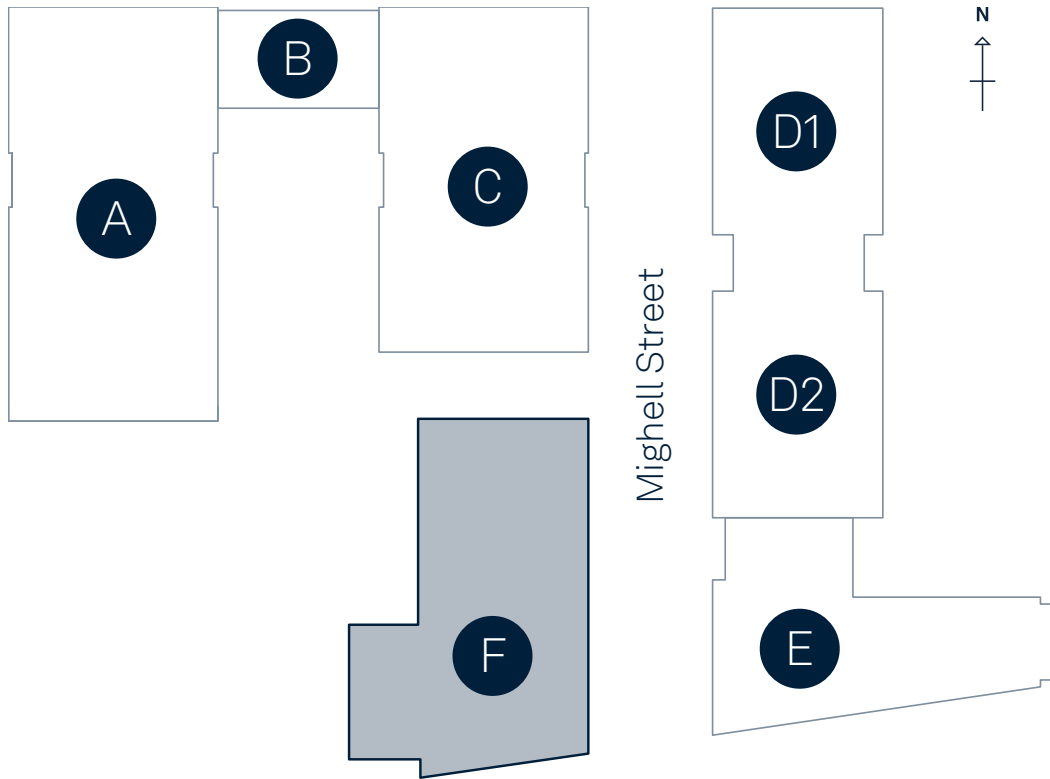


EDWARD  
STREET  
QUARTER

# 39 Edward Street

Block F, Lower Mighell St

Residential and Office/Leisure building



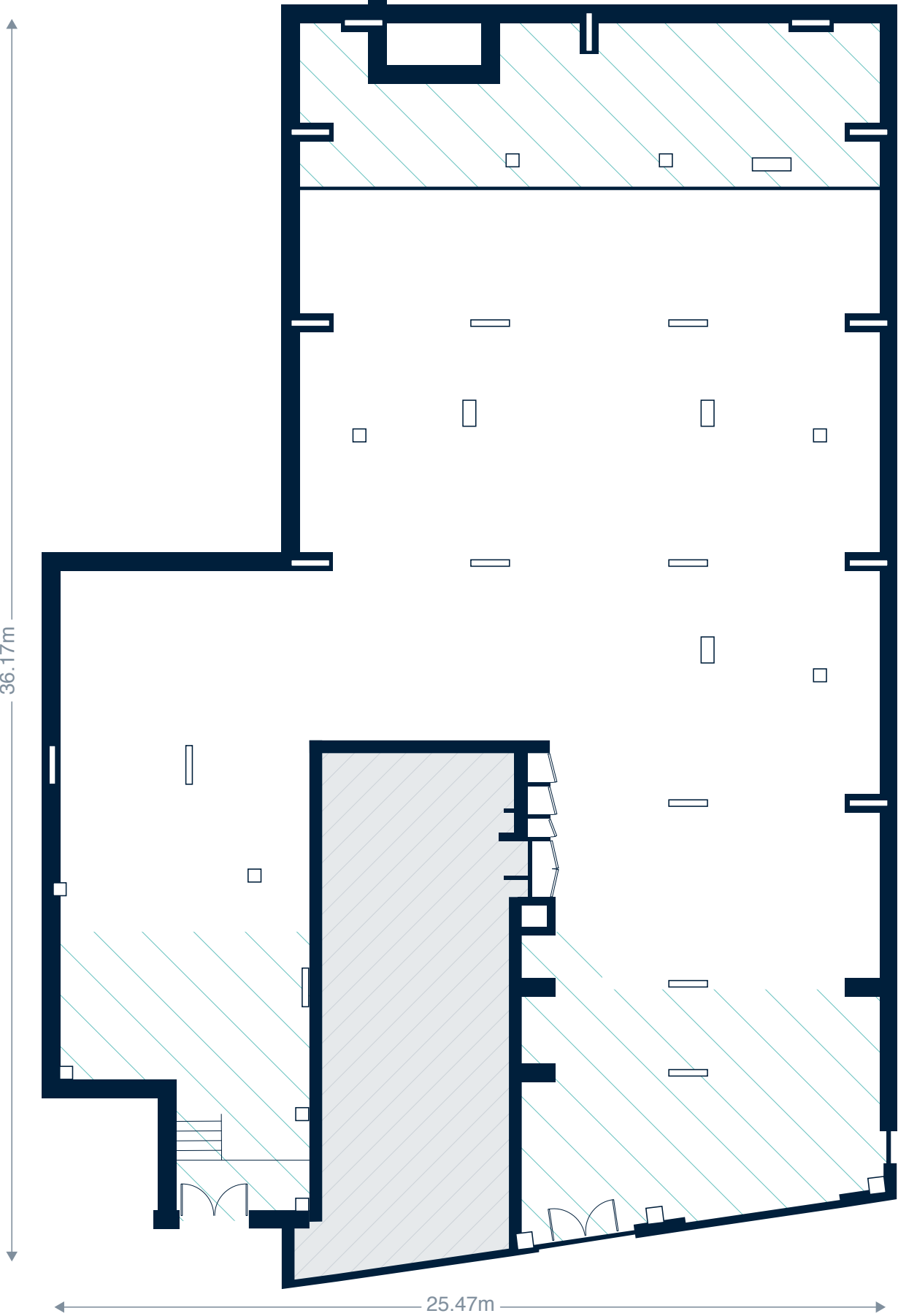
**Area:**

Lower Mighell St floor	7,225ft <sup>2</sup> 671m <sup>2</sup>
------------------------	---

**Floor to Ceiling Height:**

3,400mm (*Structural Slab Level to Concrete Soffit)
3,050mm (in hashed Northern section)
3,650mm (in the hashed Southern section)

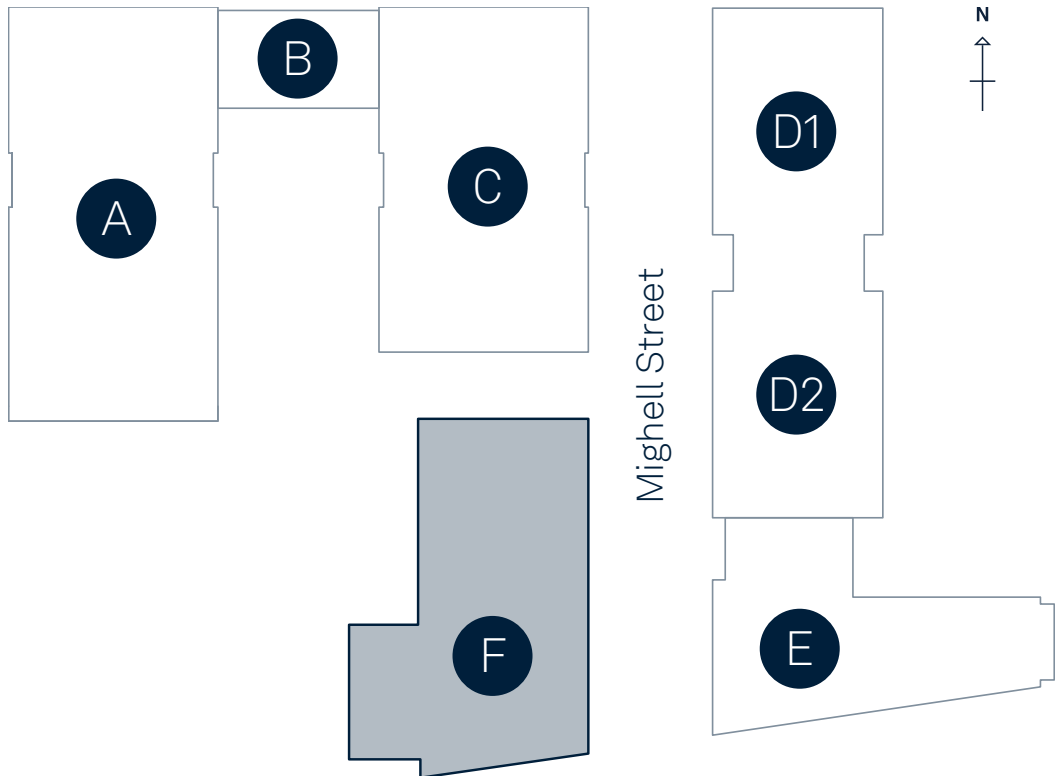
EDWARD  
STREET  
QUARTER



# 40 Edward Street

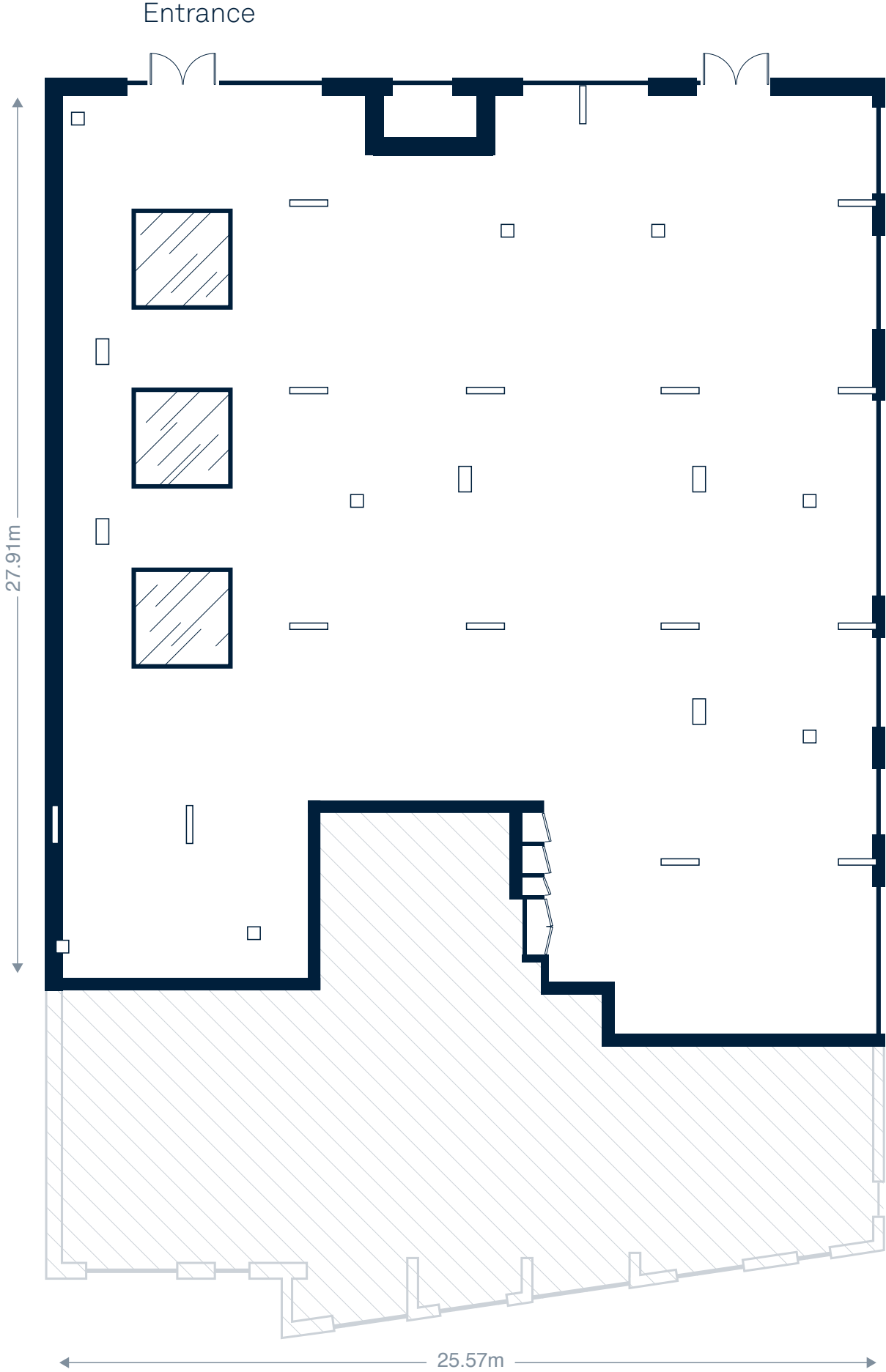
Block F, Upper Mighell St

Residential and Office/Leisure building



**Area:**  
Upper Mighell St floor 7,255ft<sup>2</sup>  
674m<sup>2</sup>

**Floor to Ceiling Height:**  
3,650mm  
(\*Structural Slab Level to Concrete Soffit)

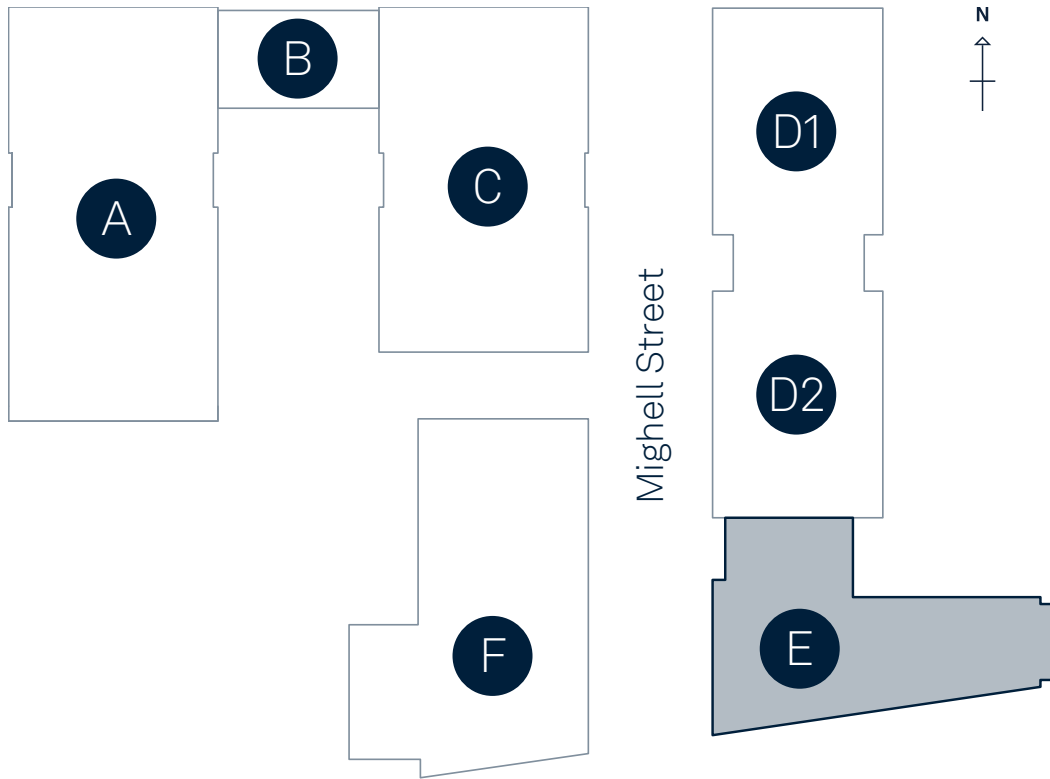


EDWARD  
STREET  
QUARTER

# 41 Edward Street

## Block E

Residential and Office/Leisure building



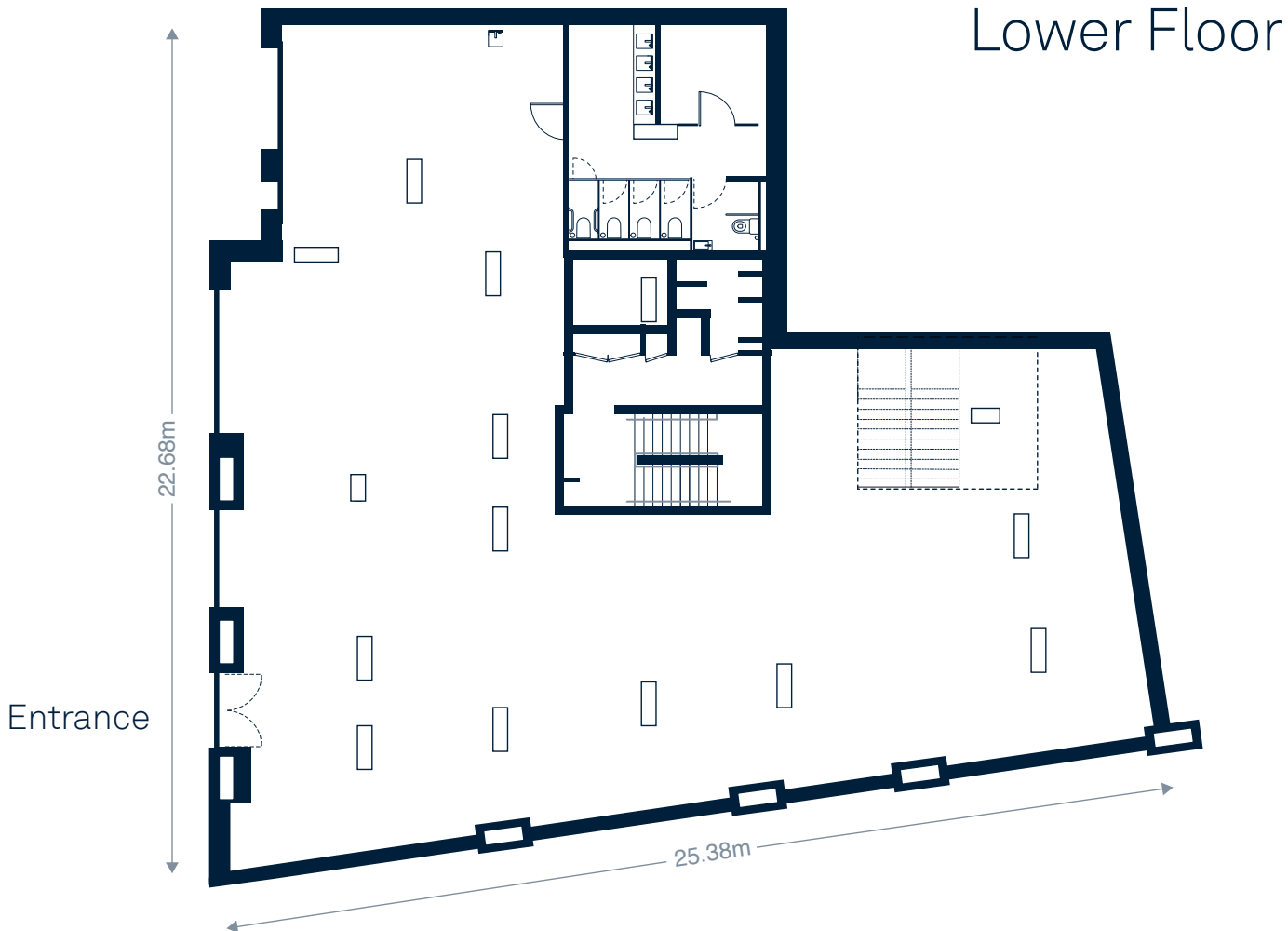
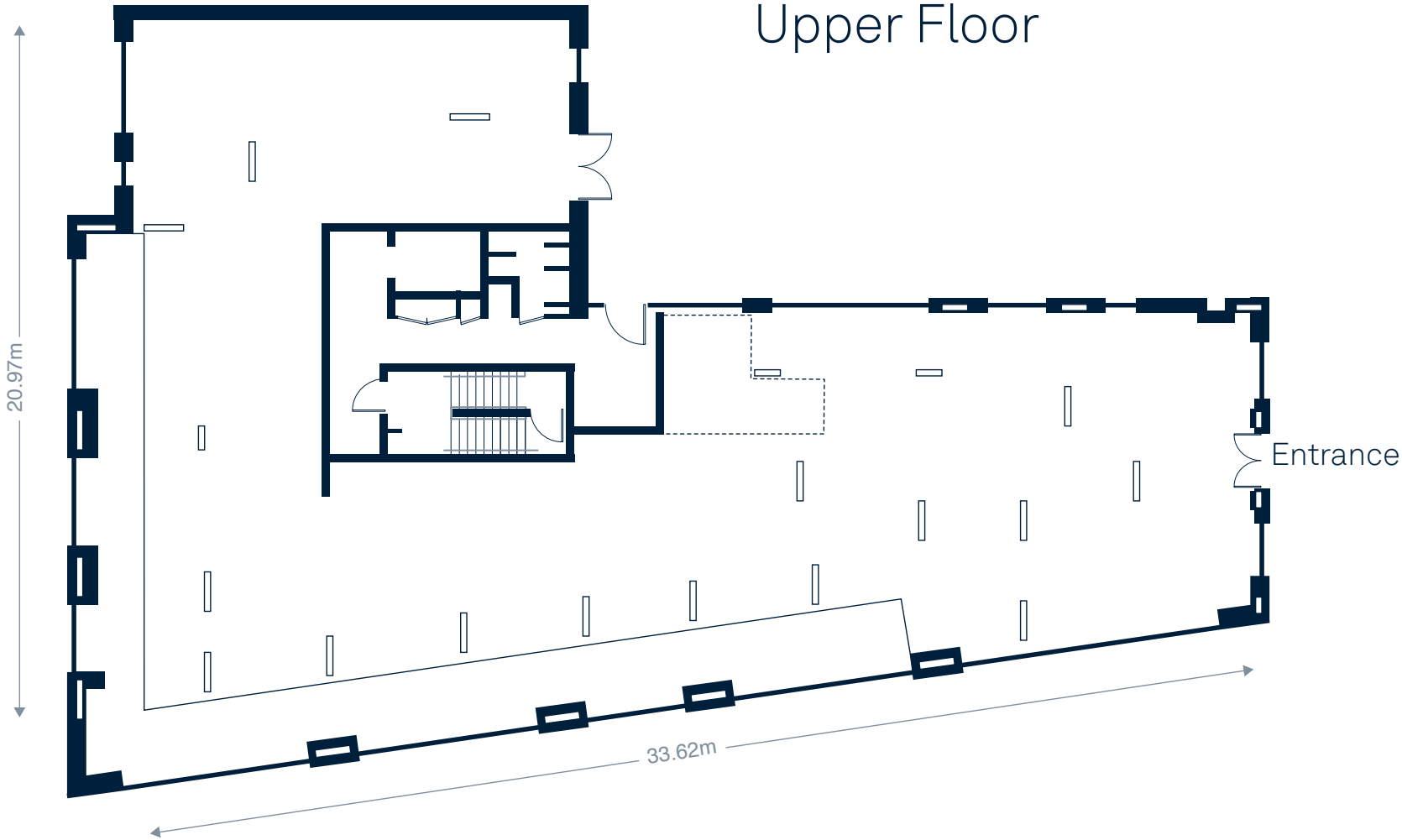
**Areas:**

Upper Floor	4,053ft <sup>2</sup> 376m <sup>2</sup>
Lower Floor	3,919ft <sup>2</sup> 364m <sup>2</sup>
	<b>7,972ft<sup>2</sup> 741m<sup>2</sup></b>

**Floor to Ceiling Height:**

Upper Floor	3,055 mm
Lower Floor	3,220 mm

(\*Structural Slab Level to Concrete Soffit)

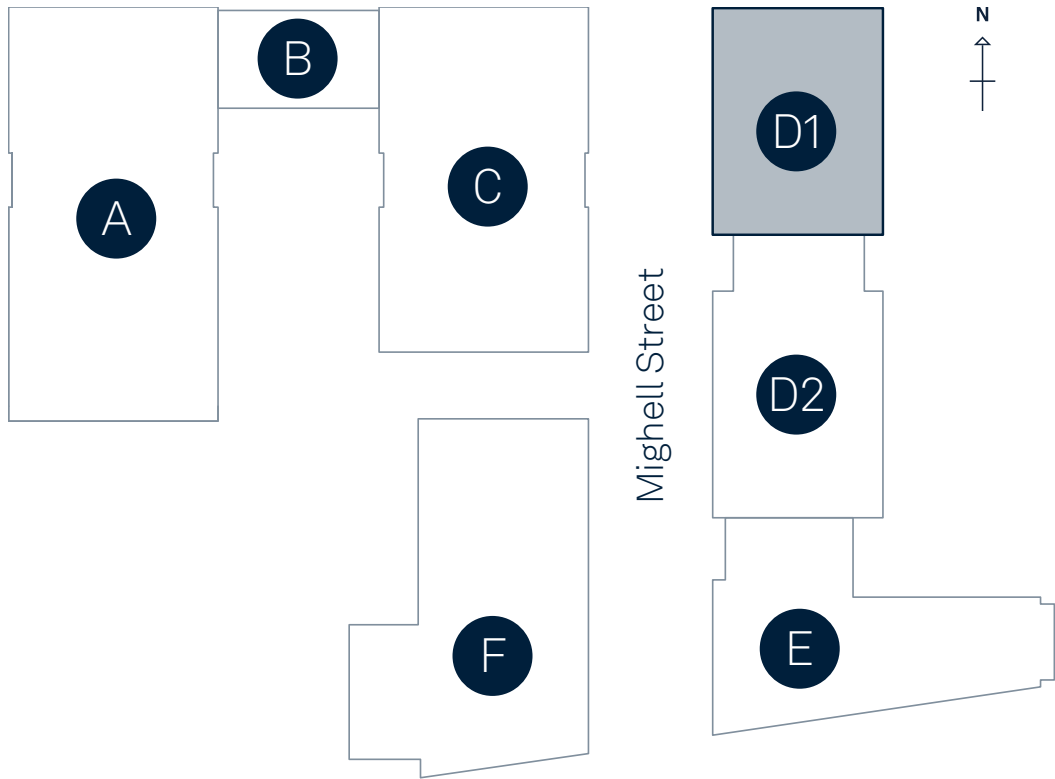


EDWARD  
STREET  
QUARTER

# 42 Mighell Street

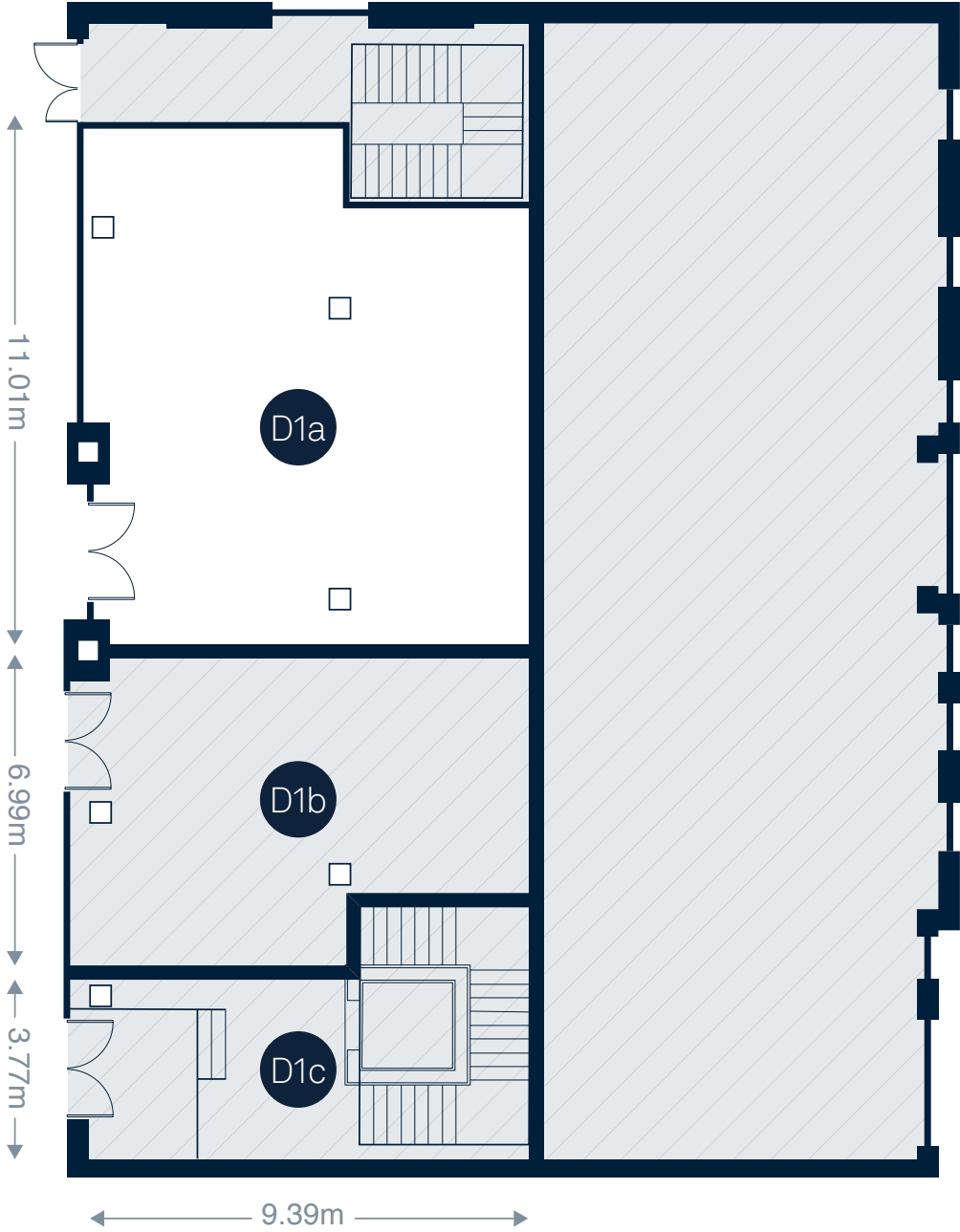
Block D — Unit D1a

Residential and Leisure building



<b>Area:</b>	
D1a Ground Floor	1,023ft <sup>2</sup> 95m <sup>2</sup>
<b>Floor to Ceiling Height:</b>	
D1a	3,200mm
(*Structural Slab Level to Concrete Soffit)	

Ground Floor

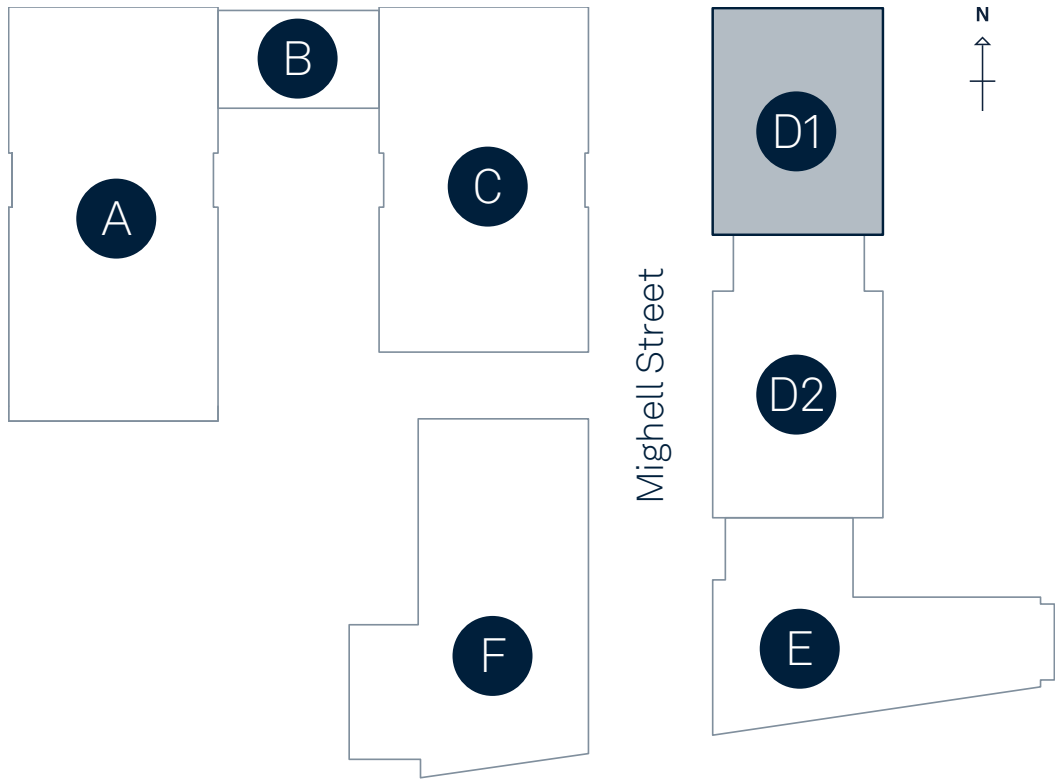


EDWARD  
STREET  
QUARTER

# 42 Mighell Street

Block D — Unit D1b

Residential and Leisure building



**Area:**

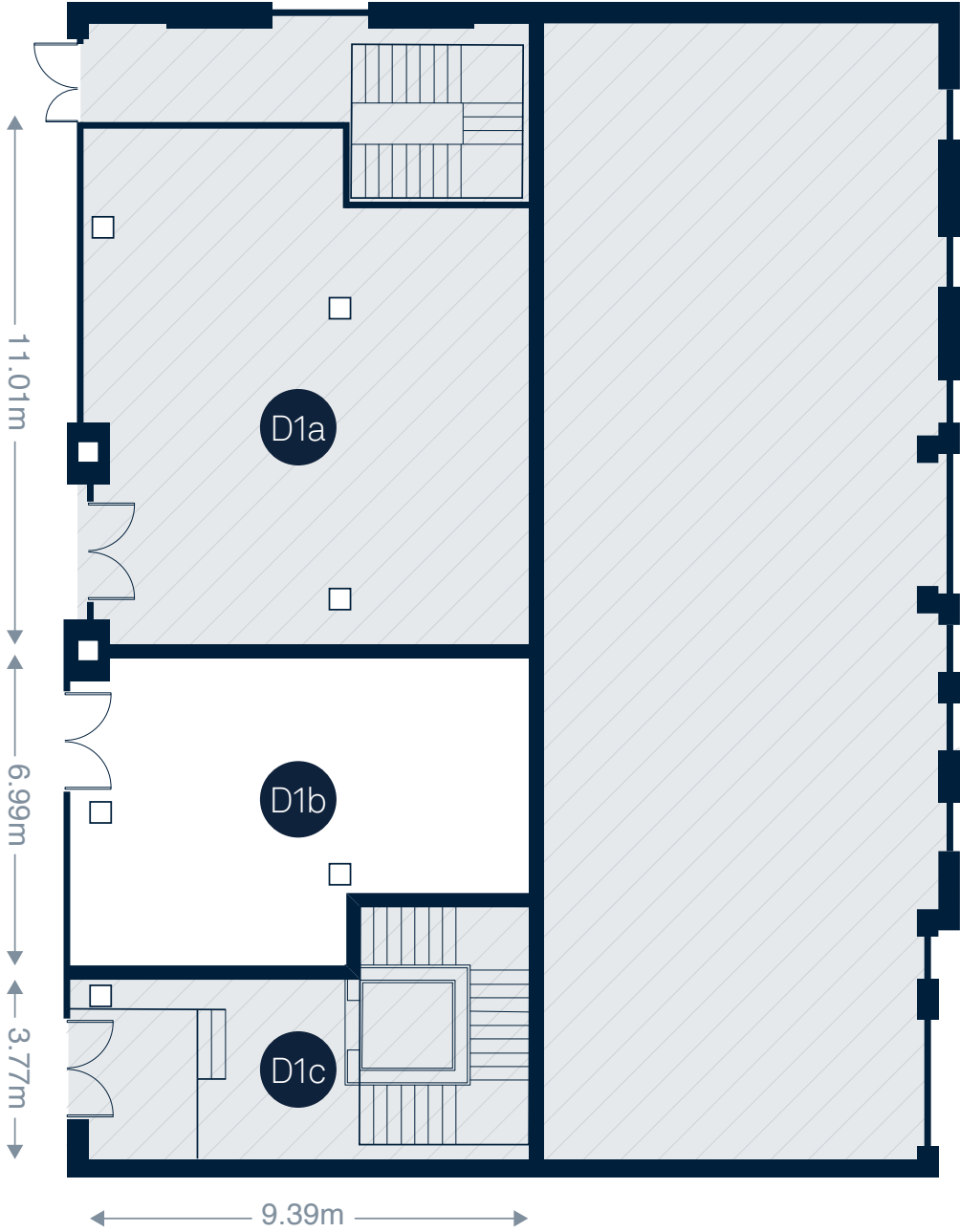
D1b Ground Floor	646ft <sup>2</sup> 60m <sup>2</sup>
------------------	--

**Floor to Ceiling Height:**

D1b	3,200mm
-----	---------

(\*Structural Slab Level to Concrete Soffit)

Ground Floor

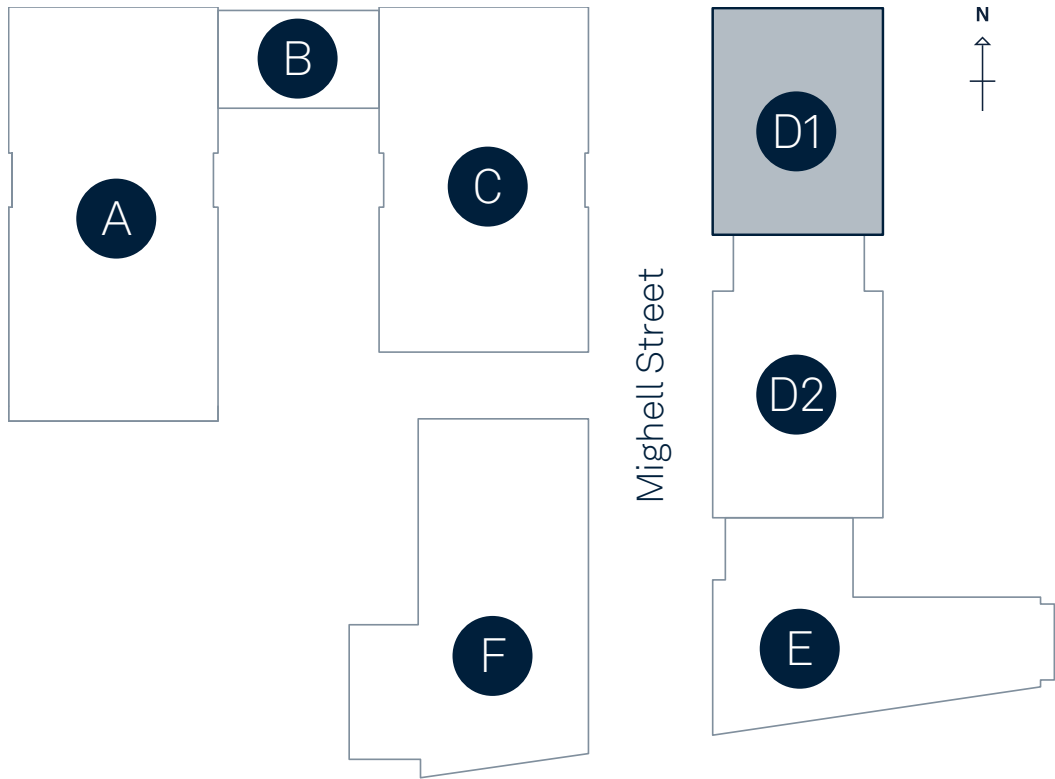


EDWARD  
STREET  
QUARTER

# 42 Mighell Street

## Block D — Unit D1c

Residential and Leisure building



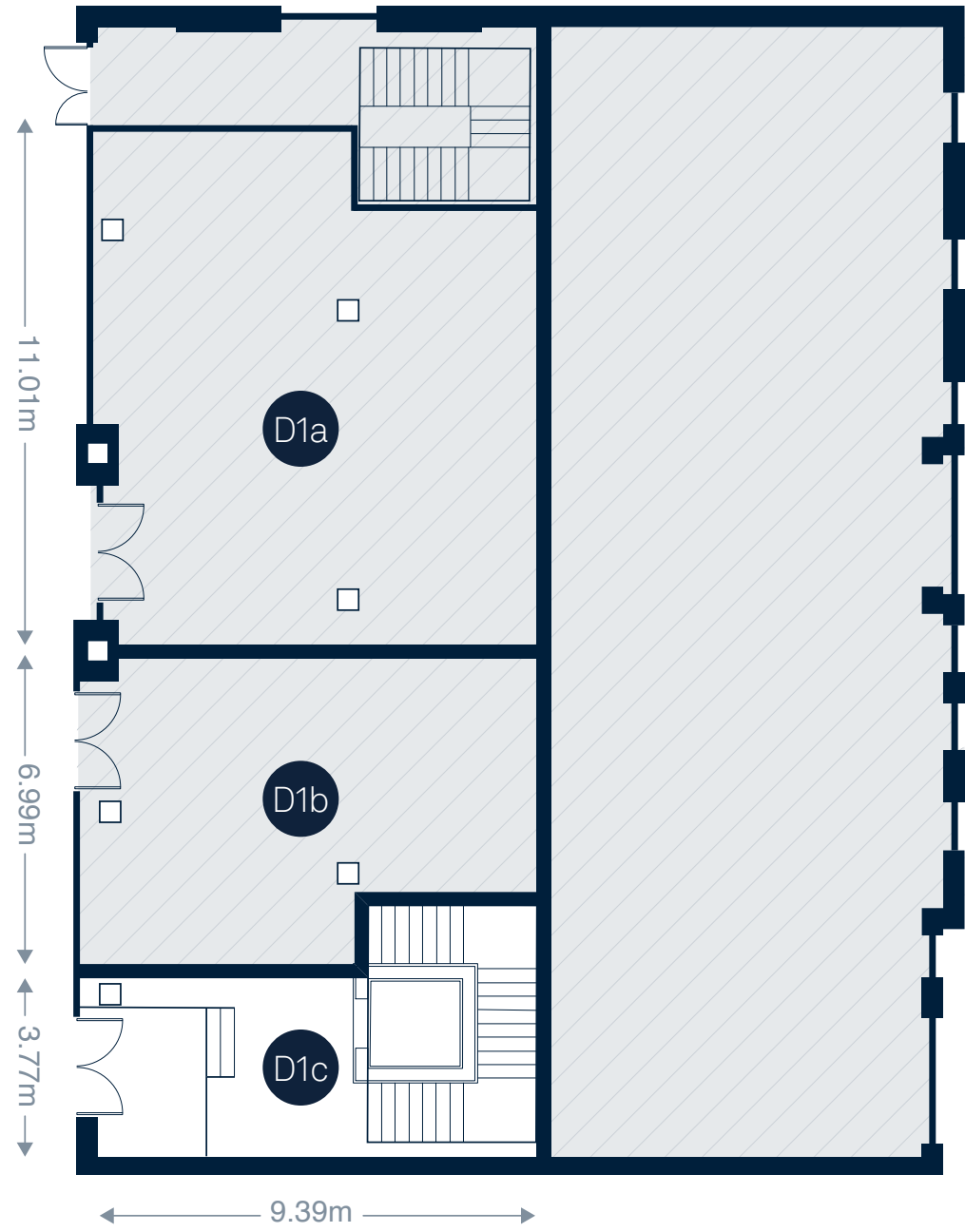
**Area:**

D1c Ground Floor	248ft <sup>2</sup> 23m <sup>2</sup>
D1c Lower Ground Floor	4,585ft <sup>2</sup> 426m <sup>2</sup>

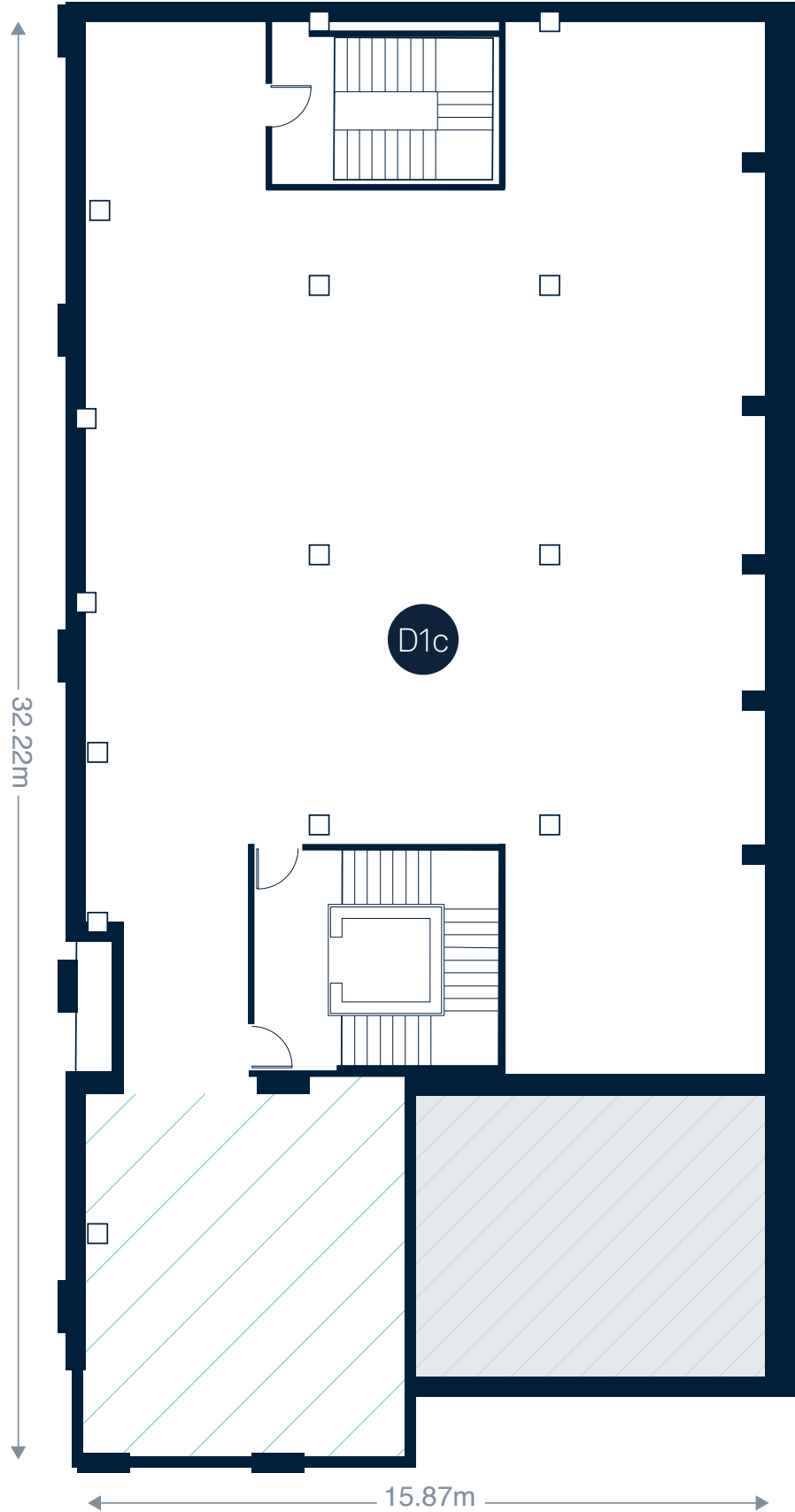
**Floor to Ceiling Height:**

D1c Ground Floor	3,200mm
D1c Lower Ground	3,250mm
(*Structural Slab Level to Concrete Soffit)	
	2,350mm
(in hashed Southern section)	

Ground Floor



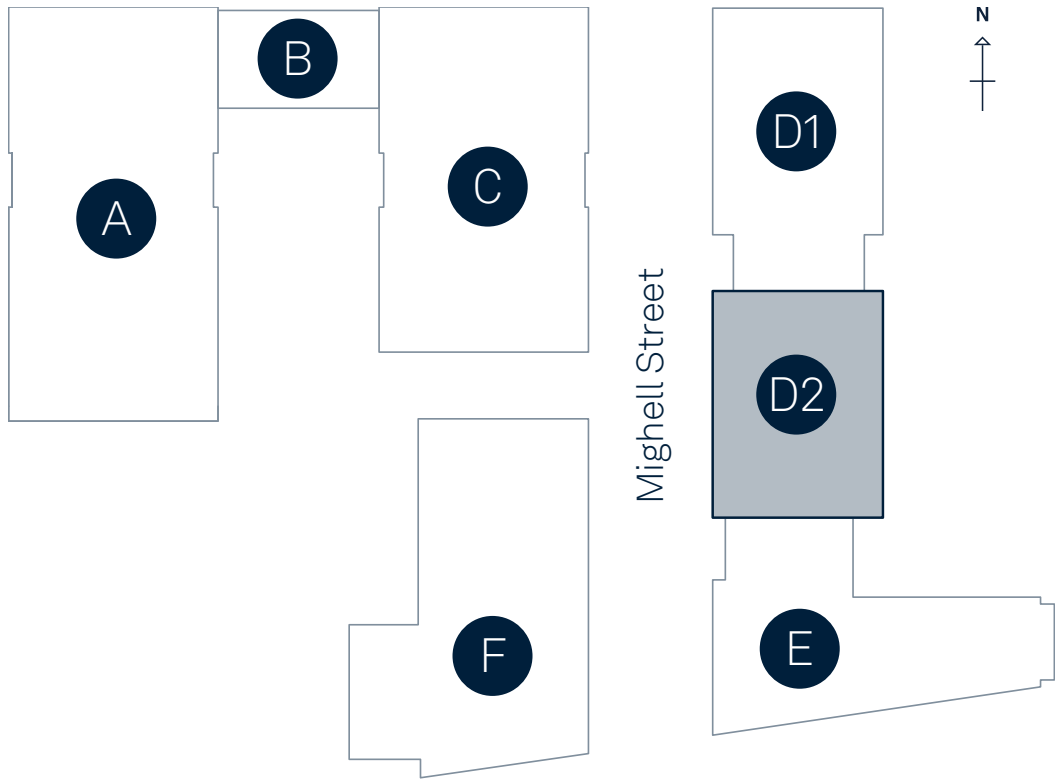
Lower Ground Floor



# 42 Mighell Street

Block D — Unit D2

Residential and Leisure building



**Area:**

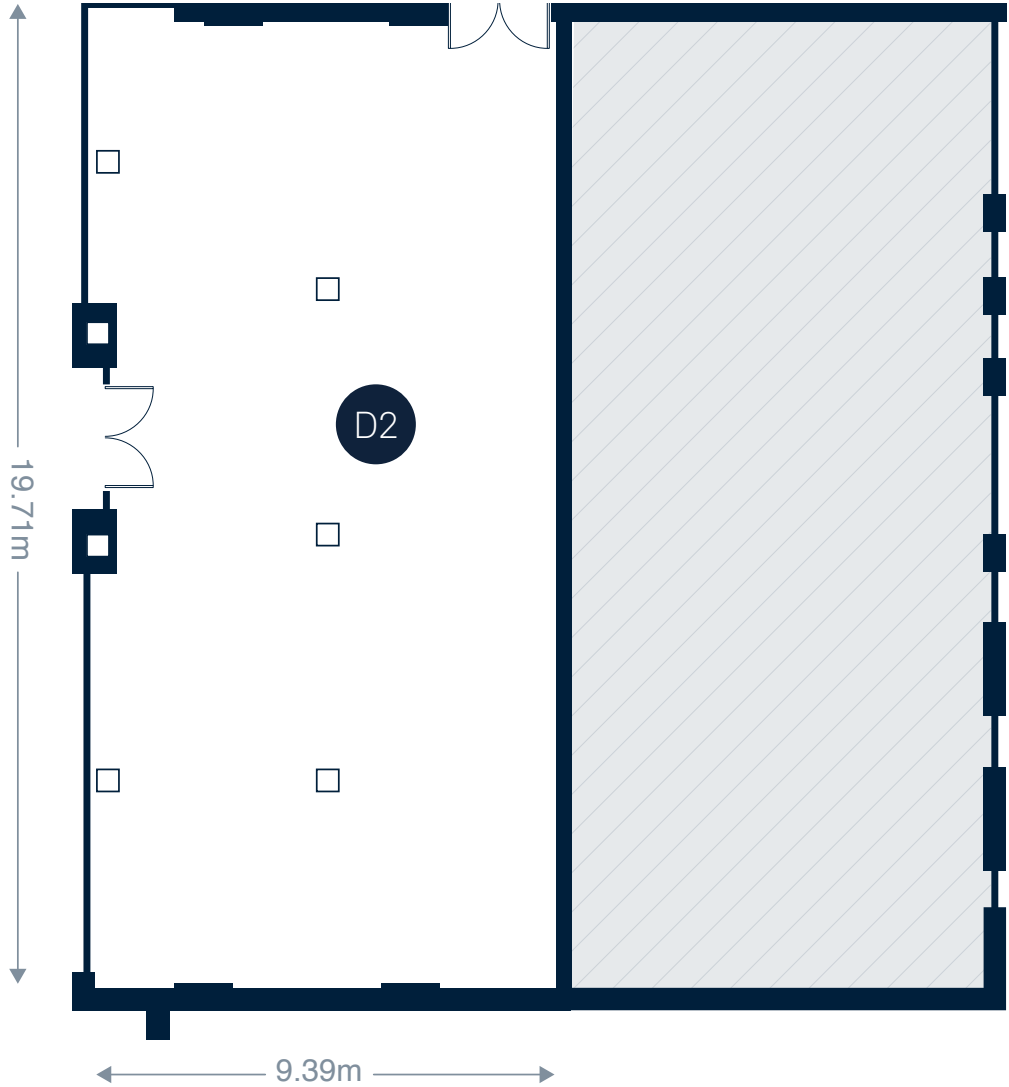
D2 Ground Floor	1,970ft <sup>2</sup>
	183m <sup>2</sup>

**Floor to Ceiling Height:**

D2	4,095mm
----	---------

(\*Structural Slab Level to Concrete Soffit)

Ground Floor



EDWARD  
STREET  
QUARTER